



## M.M.E.S. WOMEN'S ARTS AND SCIENCE COLLEGE

(Affiliated to Thiruvalluvar University)

HAKEEM NAGAR - MELVISHARAM- 632 509  
Walaja Taluk, Arcot Block Phone: 04172 266167, 266463  
Email:mmeswc@yahoo.in website:www.mmeswc.edu.in



### **Analysis of Students Feedback on Teaching (2023-2024)**

The M.M.E.S Women's Arts and Science College has conducted Students feedback during the academic year. The survey was conducted by the IQAC. The questionnaires consisted of 13 questions and 213 Students participated in the survey

The college was able to assess the views of students on curriculum and teaching through the survey. The responses in the feedback confirmed that majority of the students felt that curriculum, Standard of syllabus, Subjects, Curriculum matching the current trending technologies, CIA I,II,III Evaluation procedure, Teachers subject knowledge, Quality and teaching, Access to teaching faculty, Projects , Assignments, Student-faculty relationship, Mentoring ,Discipline inside campus are excellent

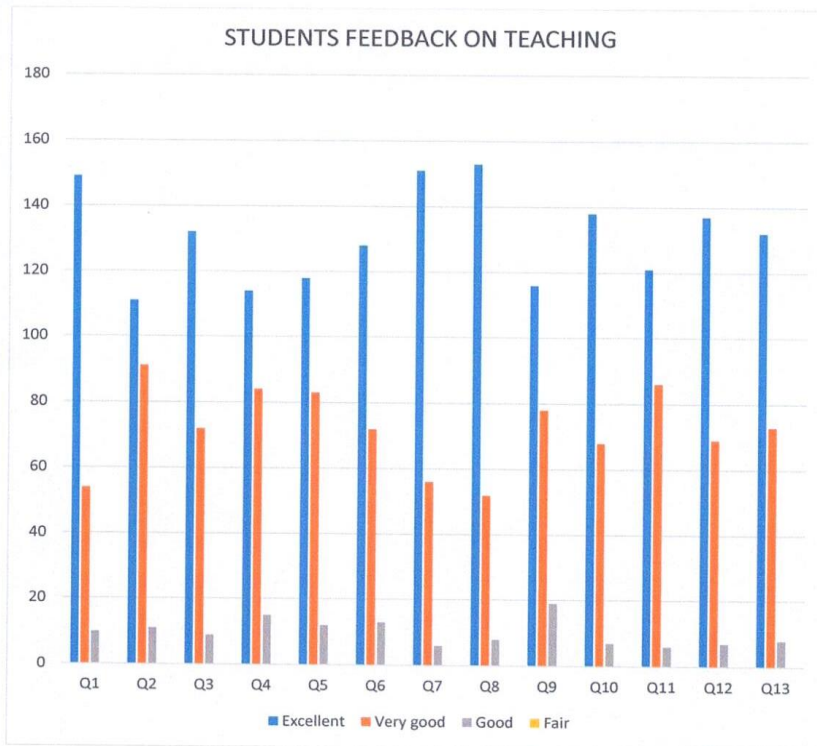
**Dr. Freda Gnanaselvam, Ph.D.,**  
Principal  
M.M.E.S. Women's Arts & Science College  
Melvisharam - 632 509

**STUDENTS FEEDBACK ON TEACHING & LEARNING**  
**M.M.E.S. WOMEN'S ARTS AND SCIENCE COLLEGE**  
**MELVISHARAM- 632509**  
**(Affiliated to Thiruvalluvar University Serkkadu Vellore district)**

S.No	Dimension Parameter	Satisfactory level
I. Curriculum and Teaching		
1	Curriculum	University curriculum is comprehensive
2		Standard of syllabus
3		Subjects
4		Curriculum matching the current trending technologies
5		CIA I,II,III Evaluation procedure
6		University Curriculum helps students in the competitive examinations
7	Teaching	Teachers subject knowledge
8		Quality and teaching
9		Access to teaching faculty
10		Projects , Assignments
11		Student-faculty relationship
12		Discipline inside campus
13		Mentoring

  
**Dr. Freda Gnanaselvam, Ph.D.,**  
Principal  
M.M.E.S. Women's Arts & Science College  
Melvisharam - 632 509

	Excellent	Very good	Good	Fair
Q1	149	54	10	0
Q2	111	91	11	0
Q3	132	72	9	0
Q4	114	84	15	0
Q5	118	83	12	0
Q6	128	72	13	0
Q7	151	56	6	0
Q8	153	52	8	0
Q9	116	78	19	0
Q10	138	68	7	0
Q11	121	86	6	0
Q12	137	69	7	0
Q13	132	73	8	0



**Dr. Freda Gnanaselvam, Ph.D.,**  
 Principal  
 M.M.E.S. Women's Arts & Science College  
 Melvisharam - 632 509





## M.M.E.S. WOMEN'S ARTS AND SCIENCE COLLEGE

(Affiliated to Thiruvalluvar University)  
HAKEEM NAGAR - MELVISHARAM- 632 509  
Walaja Taluk, Arcot Block Phone: 04172 266167, 266463  
Email:mmeswc@yahoo.in website:www.mmeswc.edu.in



### **Analysis of Students Feedback on Infrastructure (2023-2024)**

The M.M.E.S Women's Arts and Science College has conducted Students feedback during the academic year. The survey was conducted by the IQAC. The questionnaires consisted of 15 questions and 213 Students participated in the survey

The college was able to assess the views of students on Infrastructure facilities through the survey. The responses in the feedback confirmed that majority of the students felt that Classroom have sufficient desk, furniture is comfortable, laboratory, lighting and ventilation rest room, parking, prayer hall, campus garden, drinking water facility, Availability of library text books, reference books, general books, digital library, wi-fi facility and IT infrastructure are Excellent.

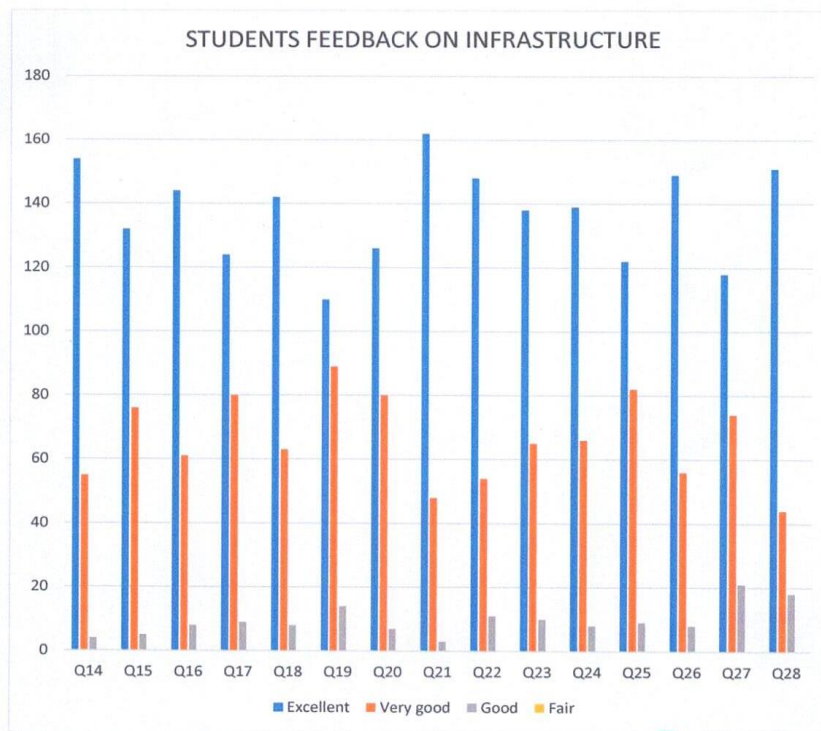
**Dr. Freda Gnanaselvam, Ph.D.,**  
Principal  
M.M.E.S. Women's Arts & Science College  
Melvisharam - 632 509

**STUDENTS FEEDBACK ON INFRASTRUCTURE**  
**M.M.E.S. WOMEN'S ARTS AND SCIENCE COLLEGE**  
**MELVISHARAM- 632509**  
**(Affiliated to Thiruvalluvar University Serkkadu Vellore district)**

II. Infrastructure facilities		
14		Classrooms have sufficient desk
15		Furniture is comfortable
16		Laboratory
17		Lighting & Ventilation
18	Amenities	Drinking water
19		Rest room
20		Parking
21		Prayer hall
22		Campus Garden
23	Library	Text Books
24		Reference Books
25		General Books
26		Digital library
27		Wi-Fi facility
28		IT Infrastructure

  
**Dr. Freda Gnanaselvam, Ph.D.,**  
Principal  
M.M.E.S. Women's Arts & Science College  
Melvisharam - 632 509

	Excellent	Very good	Good	Fair
Q14	154	55	4	0
Q15	132	76	5	0
Q16	144	61	8	0
Q17	124	80	9	0
Q18	142	63	8	0
Q19	110	89	14	0
Q20	126	80	7	0
Q21	162	48	3	0
Q22	148	54	11	0
Q23	138	65	10	0
Q24	139	66	8	0
Q25	122	82	9	0
Q26	149	56	8	0
Q27	118	74	21	0
Q28	151	44	18	0



**Dr. Freda Gnanaselvam, Ph.D.,**  
Principal  
M.M.E.S. Women's Arts & Science College  
Melvisharam - 632 509



## M.M.E.S. WOMEN'S ARTS AND SCIENCE COLLEGE

(Affiliated to Thiruvalluvar University)  
HAKEEM NAGAR - MELVISHARAM- 632 509  
Walaja Taluk, Arcot Block Phone: 041 72 266167, 266463  
Email:mmeswc@yahoo.in website:www.mmeswc.edu.in



### **Analysis of Students Feedback on Students Support Services (2023-2024)**

The M.M.E.S Women's Arts and Science College has conducted Students feedback during the academic year. The survey was conducted by the IQAC. The questionnaires consisted of 25 questions and 213 Students participated in the survey

The college was able to assess the views of students on Students support services through the survey. The responses in the feedback confirmed that majority of the students felt that Administration services, canteen services, sports and games, Co-curricular activities, scholarship services, placement services and bank services offered by the college are excellent.

**Dr. Freda Gnanaselvam, Ph.D.,**  
Principal  
M.M.E.S. Women's Arts & Science College  
Melvisharam - 632 509



**STUDENTS FEEDBACK ON STUDENT SUPPORT SERVICES**  
**M.M.E.S. WOMEN'S ARTS AND SCIENCE COLLEGE**  
**MELVISHARAM- 632509**  
**(Affiliated to Thiruvalluvar University Serkkadu Vellore district)**

III Student support services		
29	Administration	Admin Staff services
30		Waiting time
31		Payment dues information
32	Canteen	Cleanliness
33		Quantity of Materials
34		Food served in canteen
35		Behavior of service personnel.
36	Sport and games	Playground
37		Fitness Centre
38		Games teacher
39	Co-curricular	NSS
40		YRC
41		RRC
42		CCC
43		Various Club activities
44	Scholarships	National scholarship
45		SC scholarship
46		Private scholarship
47	Placement Services	Career counseling
48		Discipline inside campus
49		Mentoring
50	Bank services	ATM
51		Post Office
52		Ambience of the College
53		Would you recommend our College to your friends

  
**Dr. Freda Gnanaselvam, Ph.D.,**  
**Principal**  
**M.M.E.S. Women's Arts & Science College**  
**Melvisharam - 632 509**

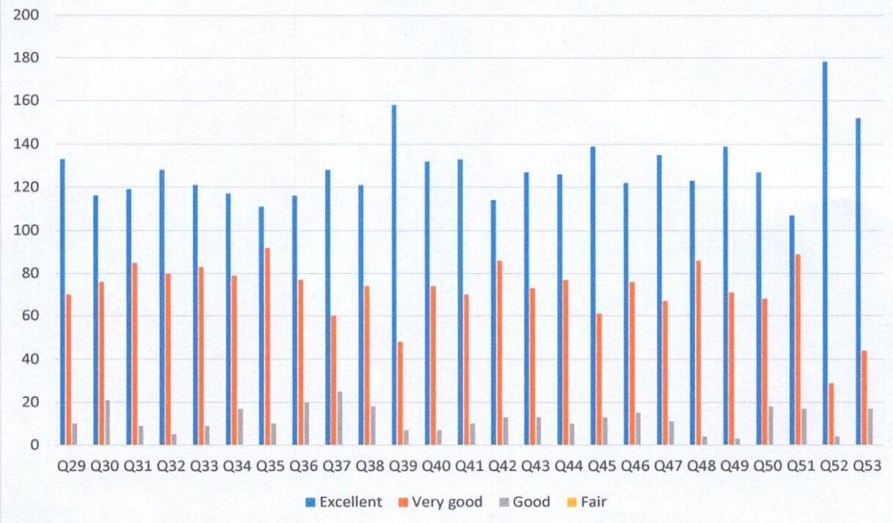


	Excellent	Very good	Good	Fair
Q29	133	70	10	0
Q30	116	76	21	0
Q31	119	85	9	0
Q32	128	80	5	0
Q33	121	83	9	0
Q34	117	79	17	0
Q35	111	92	10	0
Q36	116	77	20	0
Q37	128	60	25	0
Q38	121	74	18	0
Q39	158	48	7	0
Q40	132	74	7	0
Q41	133	70	10	0
Q42	114	86	13	0
Q43	127	73	13	0
Q44	126	77	10	0
Q45	139	61	13	0
Q46	122	76	15	0
Q47	135	67	11	0
Q48	123	86	4	0
Q49	139	71	3	0
Q50	127	68	18	0
Q51	107	89	17	0
Q52	178	29	4	0
Q53	152	44	17	0



**Dr. Freda Gnanaselvam, Ph.D.,**  
Principal  
M.M.E.S. Women's Arts & Science College  
Melvisharam - 632 509

### STUDENTS FEEDBACK ON STUDENT SUPPORT SERVICES



**Dr. Freda Gnanaselvam, Ph.D.,**  
 Principal  
 M.M.E.S. Women's Arts & Science College  
 Melvisharam - 632 509